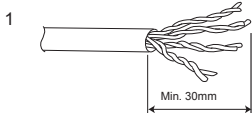
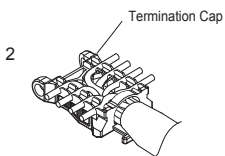


Termination instructions

- Opus OC1002

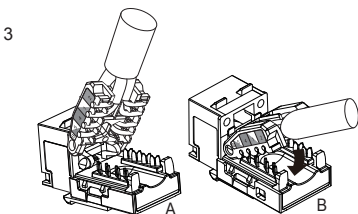


Strip off minimum 30mm of cable jacket.



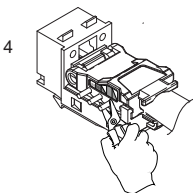
Insert cable into termination cap. Position each pair to appropriate slots according to wiring label.

Remain "un-twist" as much as possible.



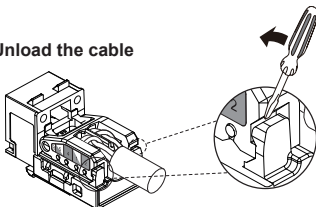
A. Attach one end of termination cap onto the hinge of jack, and attach the other end subsequently.

B. Press termination cap all the way down.



Trim all wires flush with wire cap, wires ends must be cut flush!

Unload the cable



Pry termination cap gently by using flat screw driver at rear IDC housing. Pry one end first and then the other end subsequently.